



# NOIRLab: International Gemini Observatory

**Eduardo Toro Rivera**  
Information Technology Engineer  
ITOPS

AMREN Project Meeting - June 2021





# Agenda

- **General Overview: Gemini Observatory**
- **ITOps (Information Technology Operations Service)**
- **Backbone Networks**
- **MSO (Medium Scale Observatories) & Gemini South Integration**
- **Main Network Activities During 2020**
- **Future Network Activities**

**NOIRLab: National Optical and Infrared Astronomy Research Laboratory**



# General Overview: Gemini Observatory

## Mission:

“To advance our knowledge of the Universe by providing the International Gemini community with forefront access to the entire sky”

“Enable breakthrough discoveries in astrophysics developing and operating state-of-the-art ground-based observatories and providing data products and services for a diverse and inclusive community”

## NOIRLab Programs

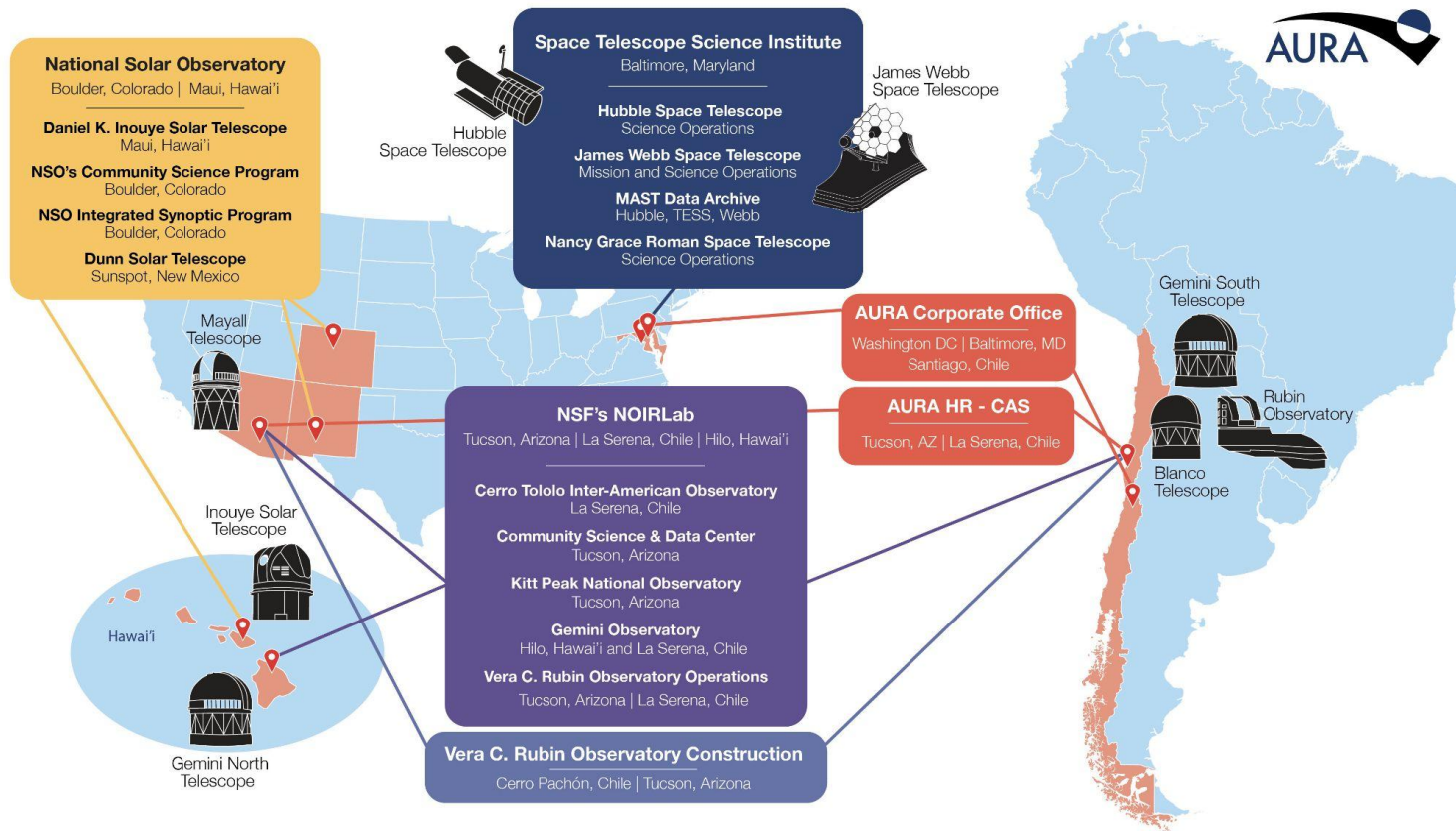
- CTIO (Cerro Tololo Interamerican Observatory)
- CSDC (Community Science and Data Center)
- International GEMINI Observatory - Introductory Video: [Gemini Observatory](#)
- KPNO (Kitt Peak National Observatory)
- Vera Rubin Observatory (LSST Telescope)

**AURA** operates these facilities and NSF’s NOIRLab under a cooperative agreement with NSF

\* Source: <https://www.gemini.edu> , <https://noirlab.edu/>



# General Overview: Gemini Observatory



# General Overview: Gemini Observatory

“ One Observatory, Two Telescopes ”

## Gemini Telescopes

- Gemini North
  - Mauna Kea Mountain Operations(MKO), Hawaii
- Gemini South
  - Cerro Pachón Operations(CPO) , Chile

## Gemini Partners

- United States
- Canada
- Chile
- Brazil
- Argentina
- Korea



# ITOps

## Overview

ITOps infrastructure and operations support standardizes system deployment and management as well as IT support requirements reaching all levels of NOIRLab. This includes Astronomy IT Operations, Business IT Operations, NOIRLab business and service areas.

## Business IT Operations

Delivers and supports integrated IT services across all NOIRLab sites. Provides the IT services necessary to run the business of a modern, globally distributed organization.

## Astronomy IT Operations

Delivers and supports enterprise computing services dedicated to supporting science.

## The Team

23 staff distributed across all NOIRLab sites in Chile, Hawaii and Tucson



# NOIRLab - GEMINI ITOps

## Data Centers / Key uses cases

### Gemini North

- Hilo Base Facility (HBF), Hilo
- Mauna Kea Operations (MKO), at 4200m

### Gemini South

- La Serena Base Facility (SBF), La Serena
- Cerro Pachón Operation (CPO), at 2700m

- **Base Facility Operations:** Remote Observing - VPN access
- **Summit Base Data Transfer:** High Bandwidth
- **High Availability:** World-Class availability (>99%)
- **High Reliability:** Maximum MTBF (>10 years)  
(MTBF: Mean Time Before Failure)
- **Cross-site Coordination:** Low Latency between :  
[Hilo - La Serena](#) & [La Serena - Tucson](#)
- **Cloud Data Archiving:** Upload/Download from AWS

(AWS: Amazon Web Services)





# NOIRLab - GEMINI ITOps

## Data Centers / Key uses cases

- **Base Facility Operations:**
  - Remote Observing - VPN access



Gemini South: Control Room in La Serena, Chile

- **Instrumentation**
  - Each Telescope is equipped with four instruments fed by advanced AO Systems:
    - GMOS
    - GSAOI
    - GPI
    - FLAMINGO-II
    - GEMS
    - GCAL
    - GHOST
    - SCORPIO
  - Visiting Instruments
    - DSSI
    - Phoenix
    - IGRINS
    - ZORRO

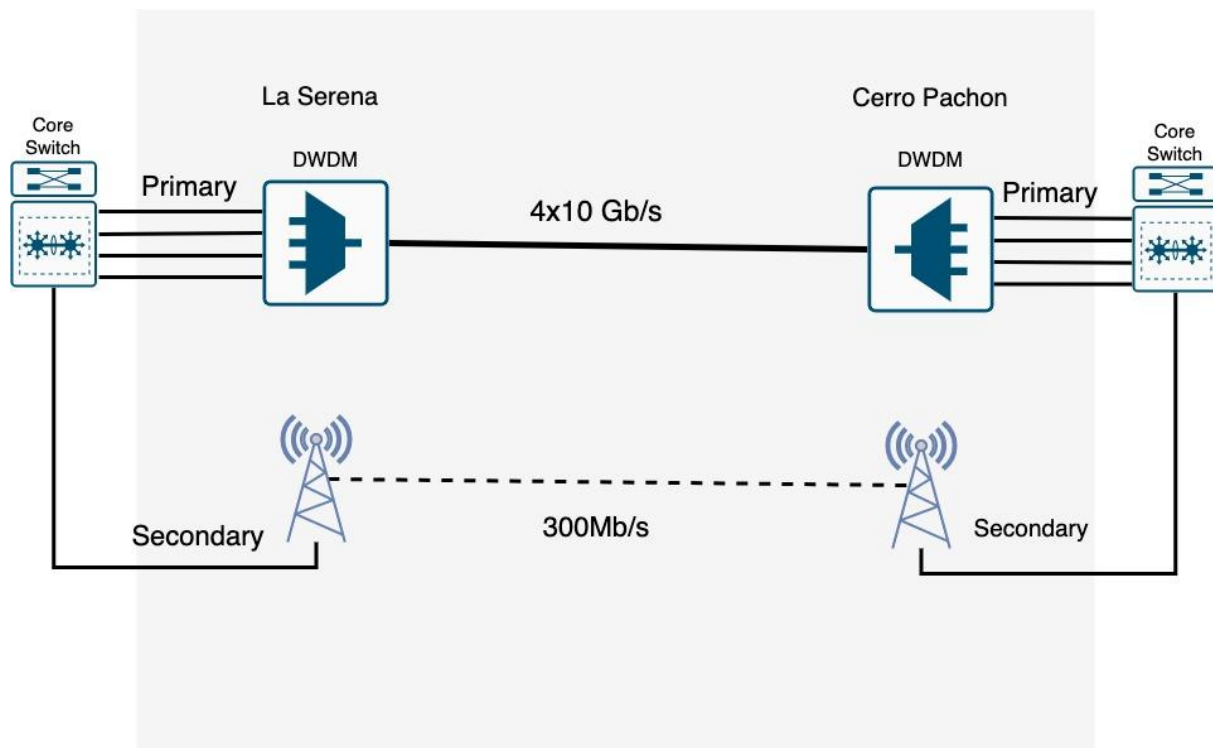




# NOIRLab - GEMINI ITOps

## Data Centers / Key uses cases

- Summit Base Data Transfer: High Bandwidth

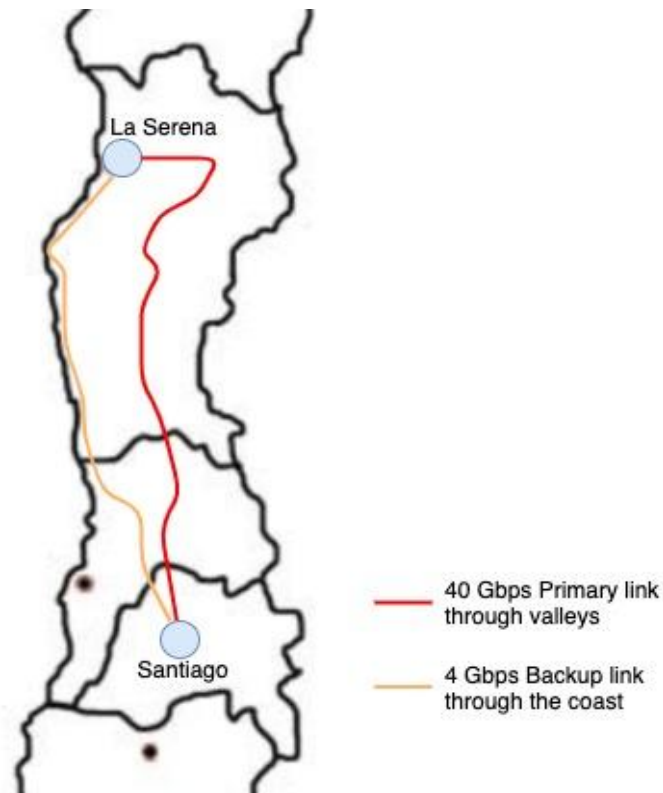




# NOIRLab - GEMINI ITOps

## Data Centers / Key uses cases

- High Bandwidth





# NOIRLab - GEMINI ITOps

## Data Centers / Key uses cases

- High Bandwidth

- 10Gbps burstable to 40Gbps on both links
- Reuna backup 10Gbps shared link
- RedClara support as Tertiary Link

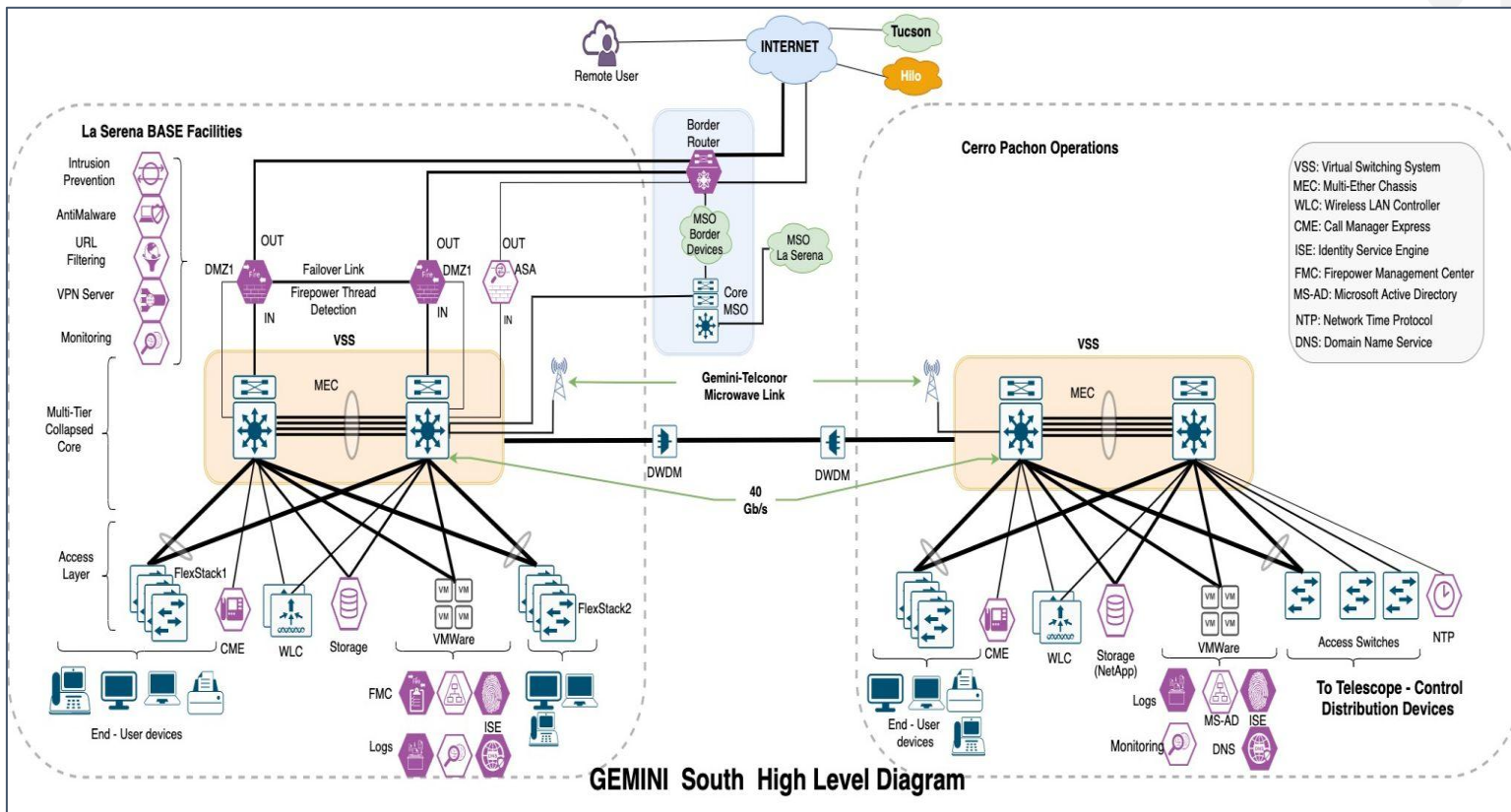




# NOIRLab - GEMINI ITOps

Data Centers / Key uses cases

High Availability / High Redundancy

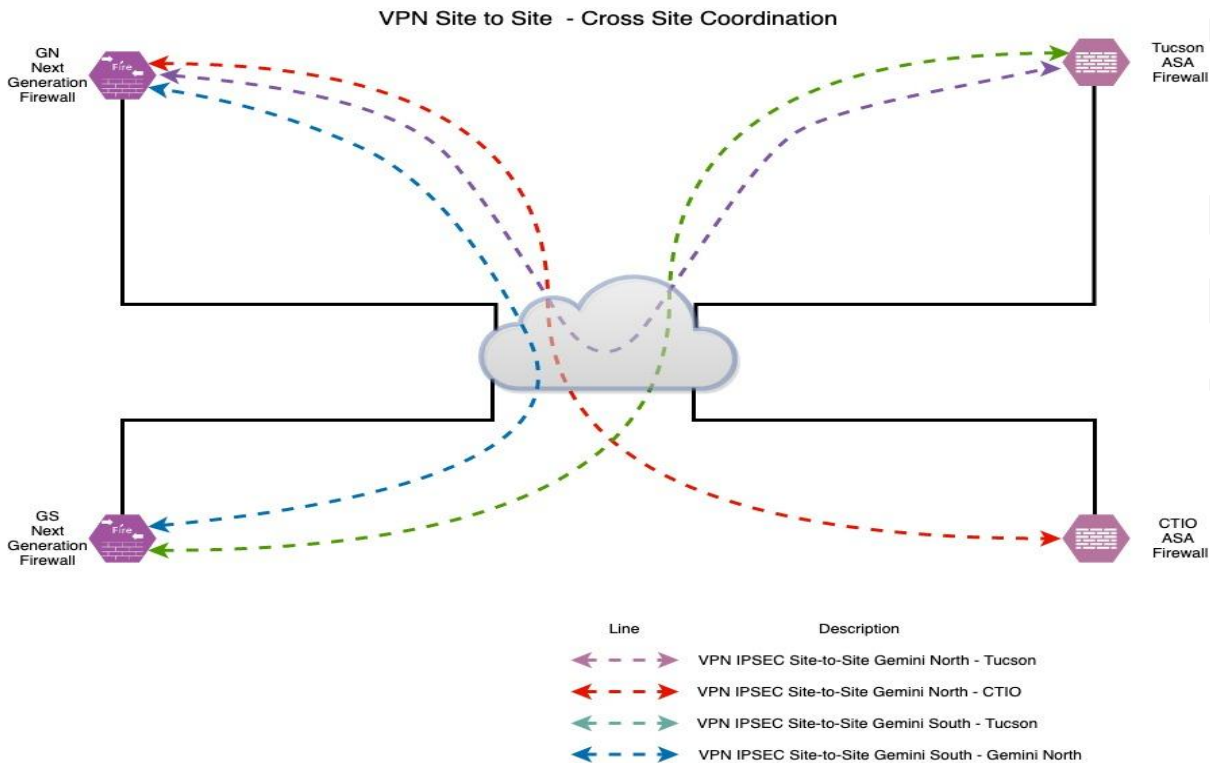




# NOIRLab - GEMINI ITOps

Data Centers / Key uses cases

Cross Site Coordination





# Integration Gemini - MSO

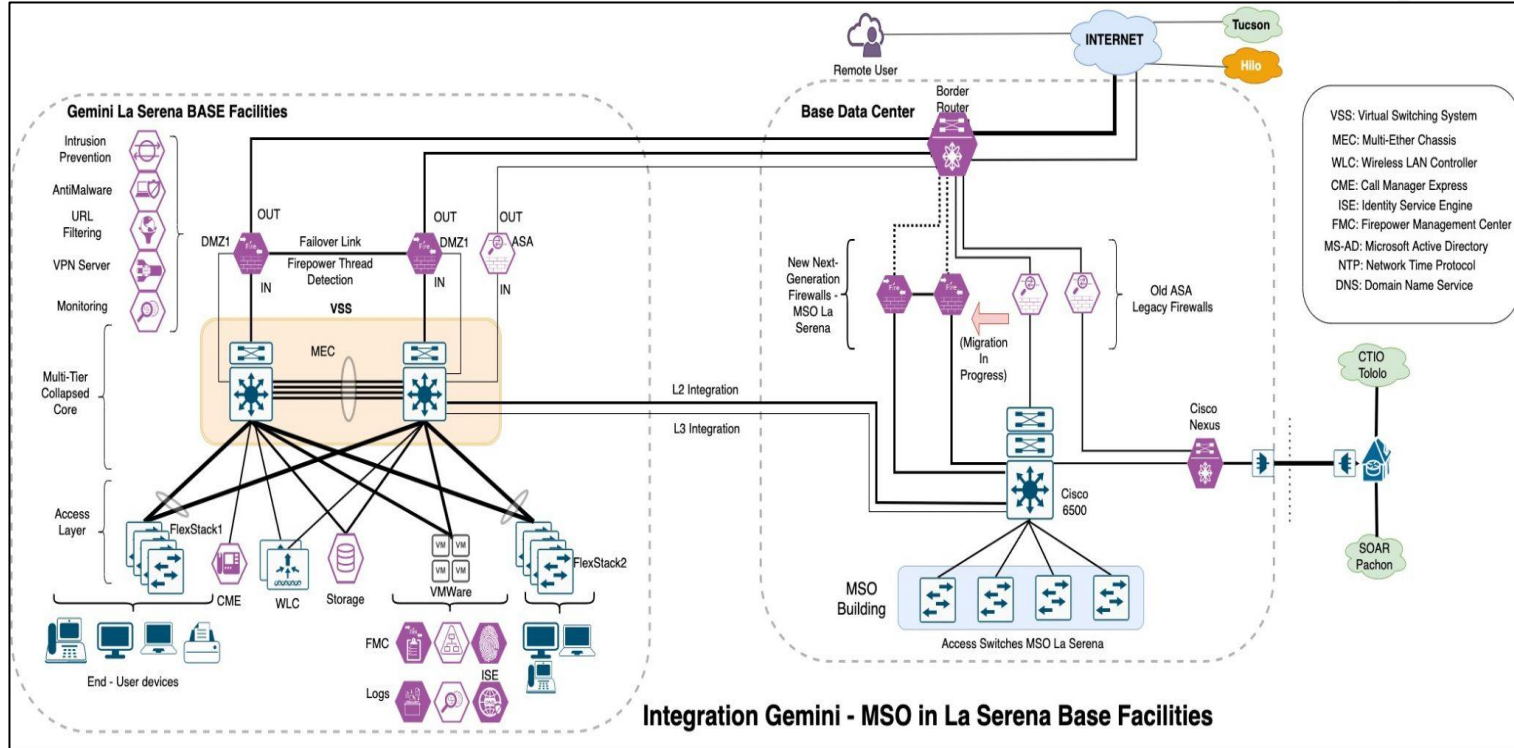
## Activities During 2020

- In Layer 2: Sharing strategic VLANs between both Programs
- In Layer 3: Adding static routes to reach specific subnets in La Serena
- WiFi :
  - Extending SSID's from Gemini to MSO buildings
  - Extending SSID's from MSO to Gemini buildings
- VoIP: Modifying Dial-Peers to communicate between both VoIP Systems
- VPN S2S: To provide encrypted connection to Authentication Servers





# Gemini & MSO Integration





# Gemini South Improvements 2020

## Next Generation Firewalls

- Increased number of Tunnel Profiles to Provide access to Remote users (GS and GN)
- Implementation of URL Filtering
  - Cisco URL License
  - ResearchSOC Initiative (<https://researchsoc.iu.edu/>)
- Traffic Control to Cerro Pachón Operations
  - Decommissioned old Cisco ASA on CPO

## Network Services & Collaborative Tools

- Authentication & Authorization :
  - Improvement ISE Nodes deployment, Licensing, Many new Policy Set Statements
- Cloud Service Desk (CSD)
- Google Workspace deployed to All

## Integration Gemini & MSO (CTIO)



# NOIRLab GEMINI Future Activities and Initiatives

## **NOIRLab Networking Upgrade Project**

- LAN Design in all Locations
  - (La Serena, Cerro Pachón, Cerro Tololo, Hilo, Mauna Kea, Tucson, Kitt Peak)
- WAN Design
- WiFi Upgrade

## **NOIRLab VoIP upgrade**

- Evaluating Cloud-Based Solutions

## **Firewall Upgrade**

- MSO Upgrade is still in Progress
- Design and Planning upgrades in many locations

## **Collaboration and Integration with Vera Rubin Observatory**



# NOIRLab GEMINI

## Future Activities and Initiatives

### Network Upgrade Project

**Based on standard technologies which could include :**

- Traditional Multi-Tier design
  - Core - Distribution - Access Topologies
  - Stacking Topologies
- Fabric L2 Leaf-Spine (Using Multi-Link Aggregation - MLAG)
- Fabric L3 Leaf-Spine (Using VXLAN/BGP/EVPN Technologies)

**Requires studying vendor capabilities**

- Such as: Cisco - Juniper - Arista

**~3 years to cover all locations**

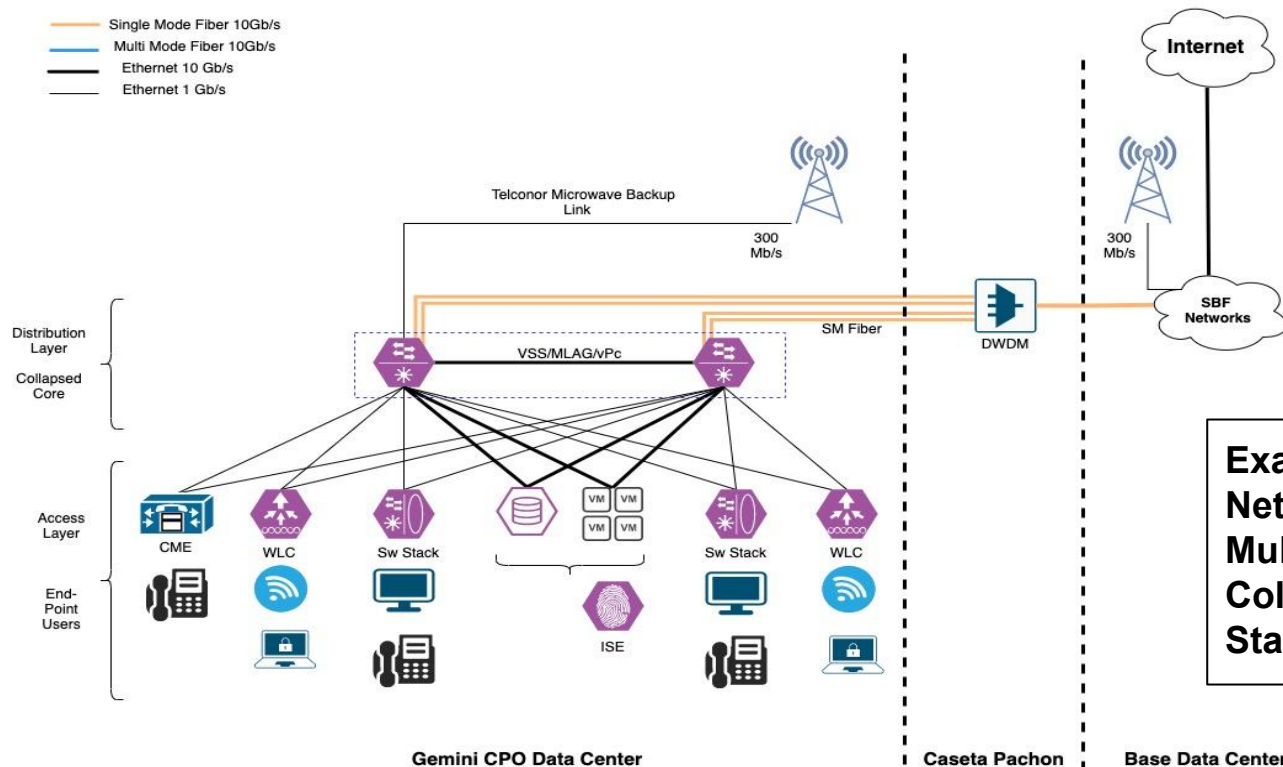
**Will involve important NOIRLab stakeholders**



# Future Activities and Initiatives

## Network Upgrade Project

### Preliminary LAN Design using Multi-Tier topology on CPO



**Example 1: Draft of CPO Network Design using Multi-Tier Design , Core Collapsed and Switch Stacking**



# NOIRLab - International Gemini Observatory ITOps



Eduardo Toro Rivera  
AMREN Project Meeting - June 10th 2021





# Acronyms





*AWS: Amazon Web Services*  
*CPO: Cerro Pachon Operations*  
*CSDC: Community Science and Data Center*  
*CTIO: Cerro Tololo Inter-American Observatory*  
*DWDM: Dense Wavelength Division Multiplexing*  
*GN: Gemini North*  
*GS: Gemini South*  
*HBF: Hilo Base Facility*  
*ITOPs: Information technology Operations Services*  
*MKO: Mauna Kea Operations*  
*MLAG: Multi-Link Aggregation*  
*MSO: Medium Scale Observatory*  
*MTBF: Mean Time Before Failure*  
*LAG: Link Aggregation*  
*NOIRLab: National Optical and Infrared Astronomy Research Laboratory*  
*SBF: La Serena Base Facility*  
*SM Fiber: Single-Mode Fiber*  
*VM: Virtual Machine*  
*vPc: Virtual Port-Channel*  
*VPN: Virtual Private Network*  
*VSS: Virtual Switching System*

Reference Web Pages : <https://www.gemini.edu/>  
<https://noirlab.edu>

*Discovering Our Universe Together*