

bris<4education

Predictive Analytics for Worldwide Education



UK Based ISV

Focus on 'Data in
Azure'

Flagship wins inc
ASOS and JustGiving

Open Source Partner
of the Year 2015

Our team has 2 Microsoft Regional Directors

3 Microsoft Most Valuable Professionals

Azure Insiders

Committers to Apache Trunk

Contributors to Microsoft OSS inc PowerBI

Our trial customer; Derby College

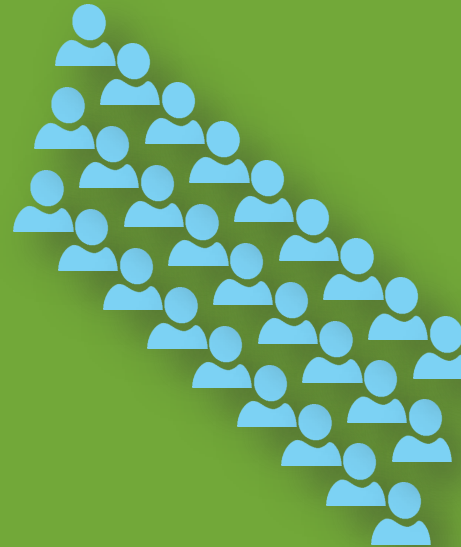
Large Successful FE
College Group in UK



Annual Revenues
\$84million



25,000 Learners



1300 Employer
Partners



Challenge

External inspectors
demanding higher
attainment and
retention



Need to Expand &
Increase quality to
meet local Economy
needs



No tool or mechanism
to Predict likely
outcomes of applicants

These predictions are
from the start of the
admission process.

No tool or Mechanism
to Predict negative
outcomes and to allow
intervention

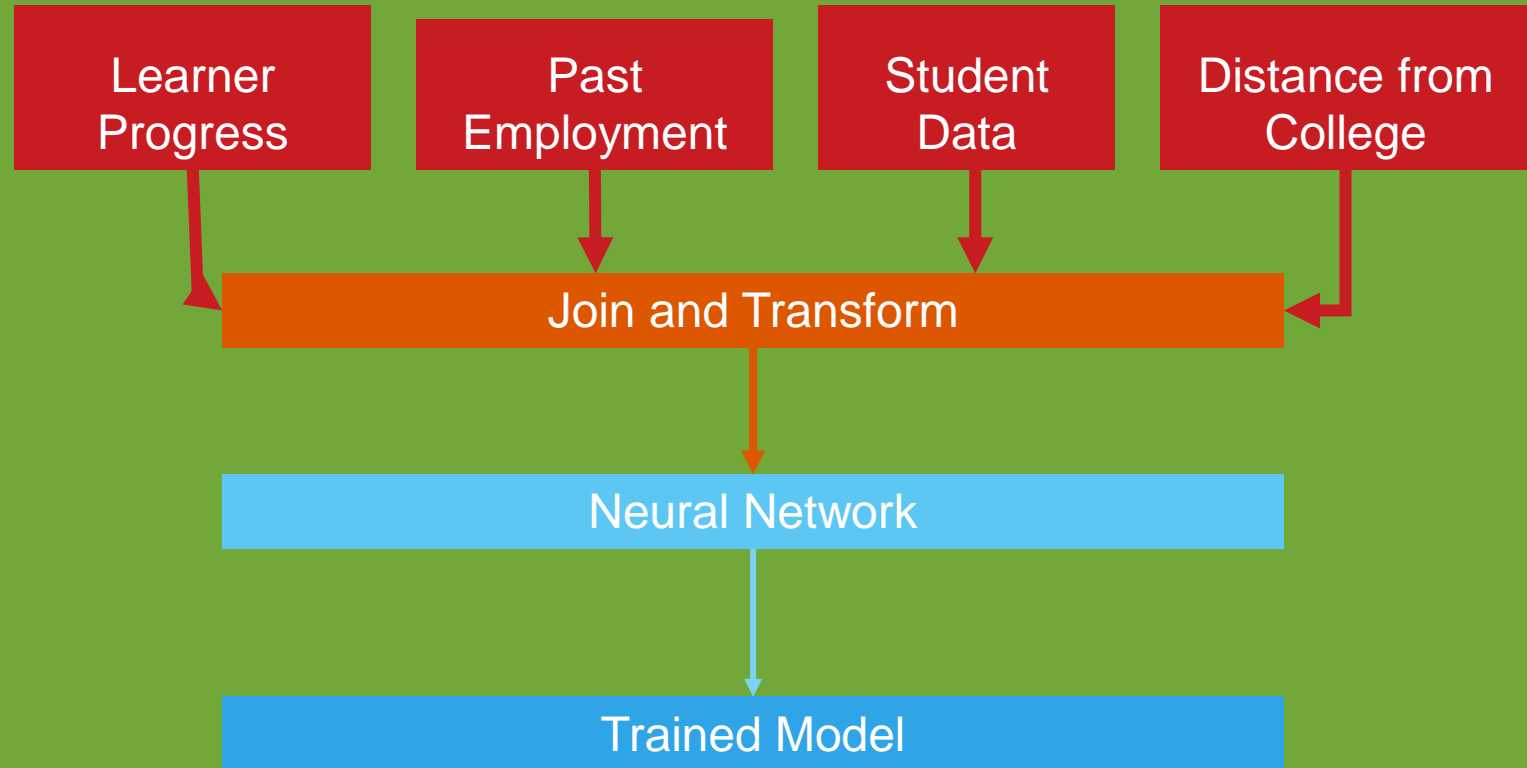
These predictions are
intra-year.

How Machine Learning Works

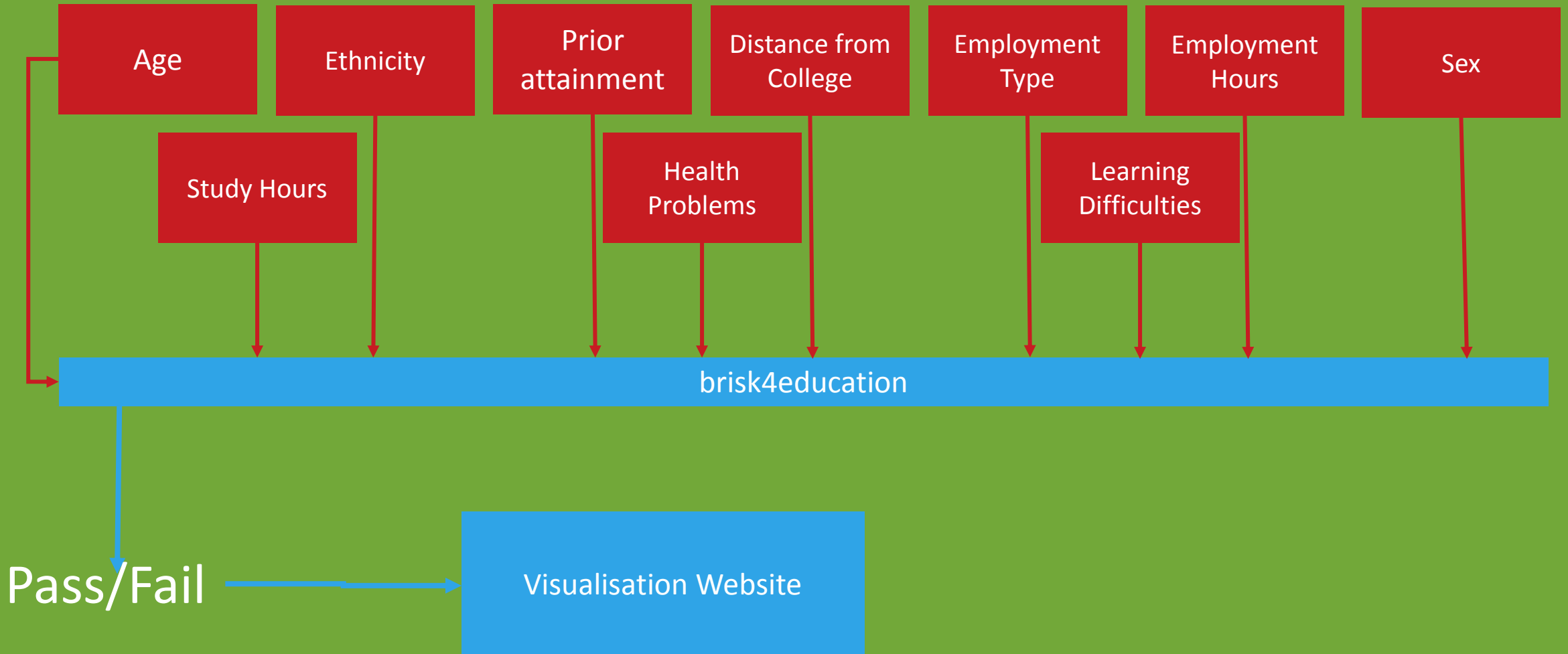
Raw Data



Prediction



Using AzureML with Derby



What are we predicting?

Predict likely retention
and achievement



Accurate income
forecasting



88% Accuracy

10 – 15% of enrollments fail in first 6 weeks

Reduce Marketing Costs

Funding Loss 10% of \$84m

Next Steps for Derby

Future prediction 1:
Geo



Matching Derby
courses with local
workforce demand



Future prediction 2:
facilities



Predicting how
facilities affect learning
outcomes

Big Data

Cloud

Machine Learning for Further
Education Data in order to boost
PROFITABILITY and **OFSTED** ratings

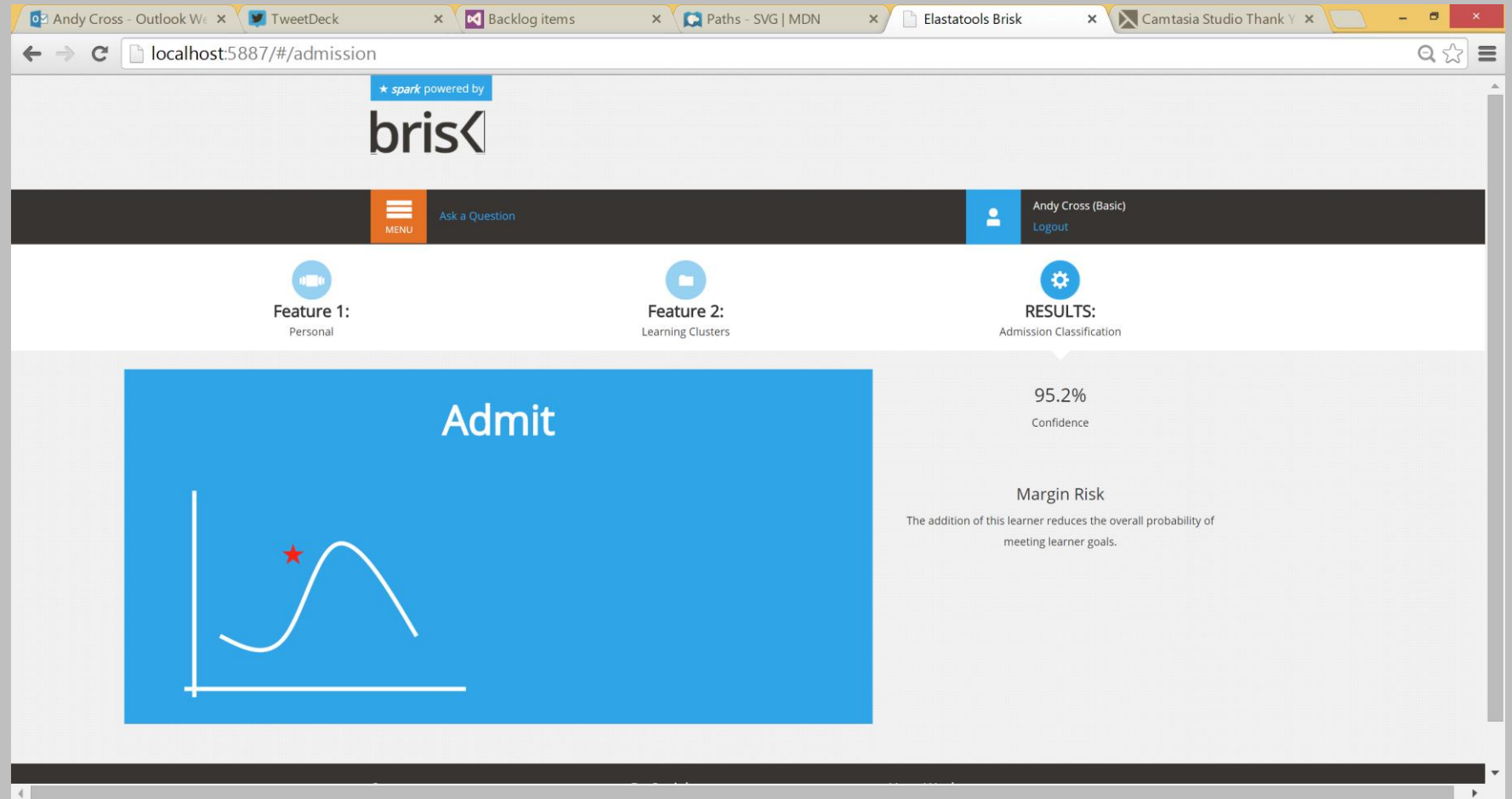
Learners

Destination

Demo

Predictive Learner Admission

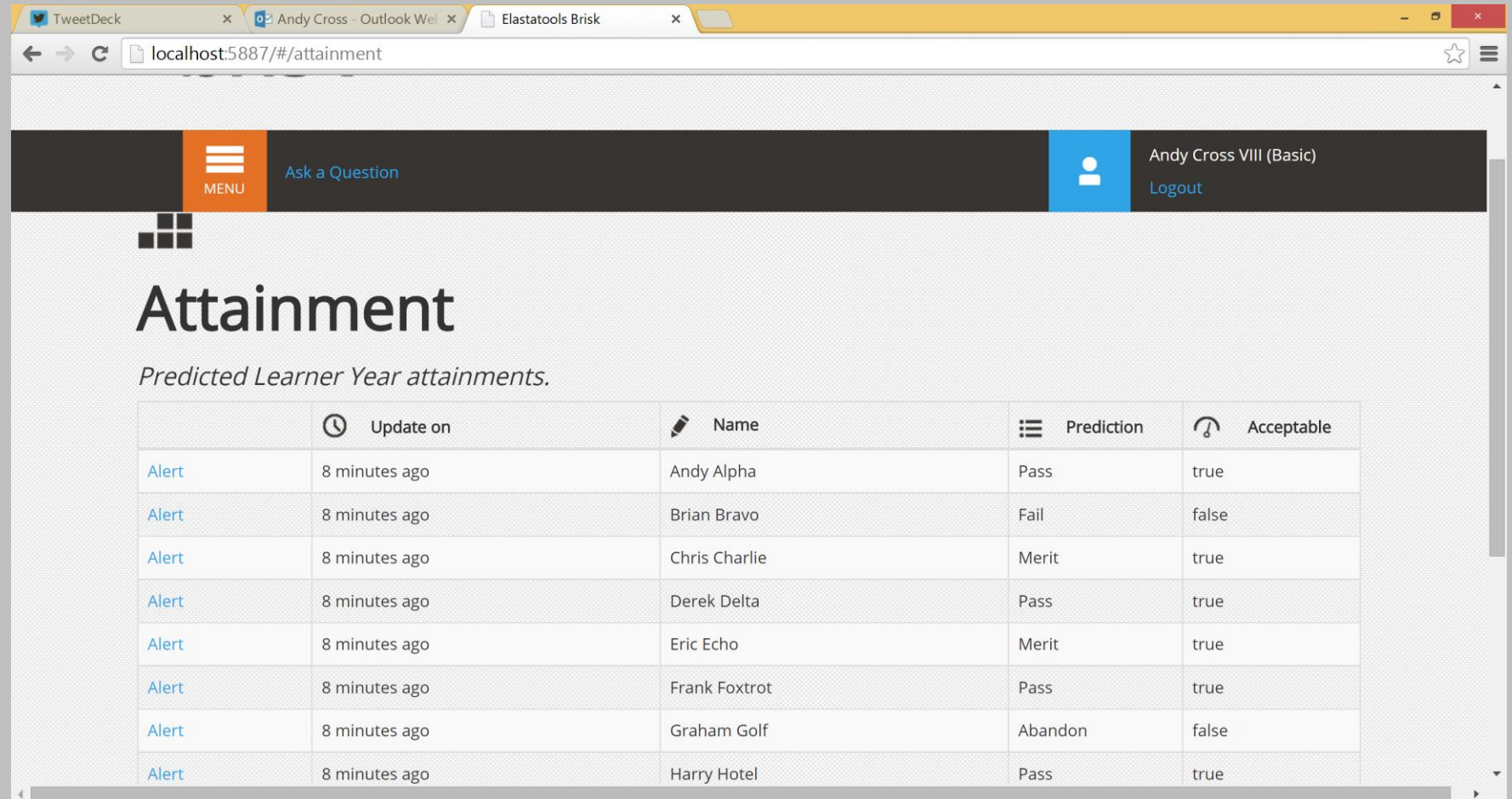
Use predictive analytics to classify potential Learners, establish likely Learning outcomes, proactively create learning plans and advise on inform Admission events



Learner Attainment Prediction

Brisk4Education uses historic modelling and predictive analytics to predict Attainment of Learners.

Institutions can then alert, manage and improve attainment of Learners based on predictive correction factors and boost their OFSTED ratings.



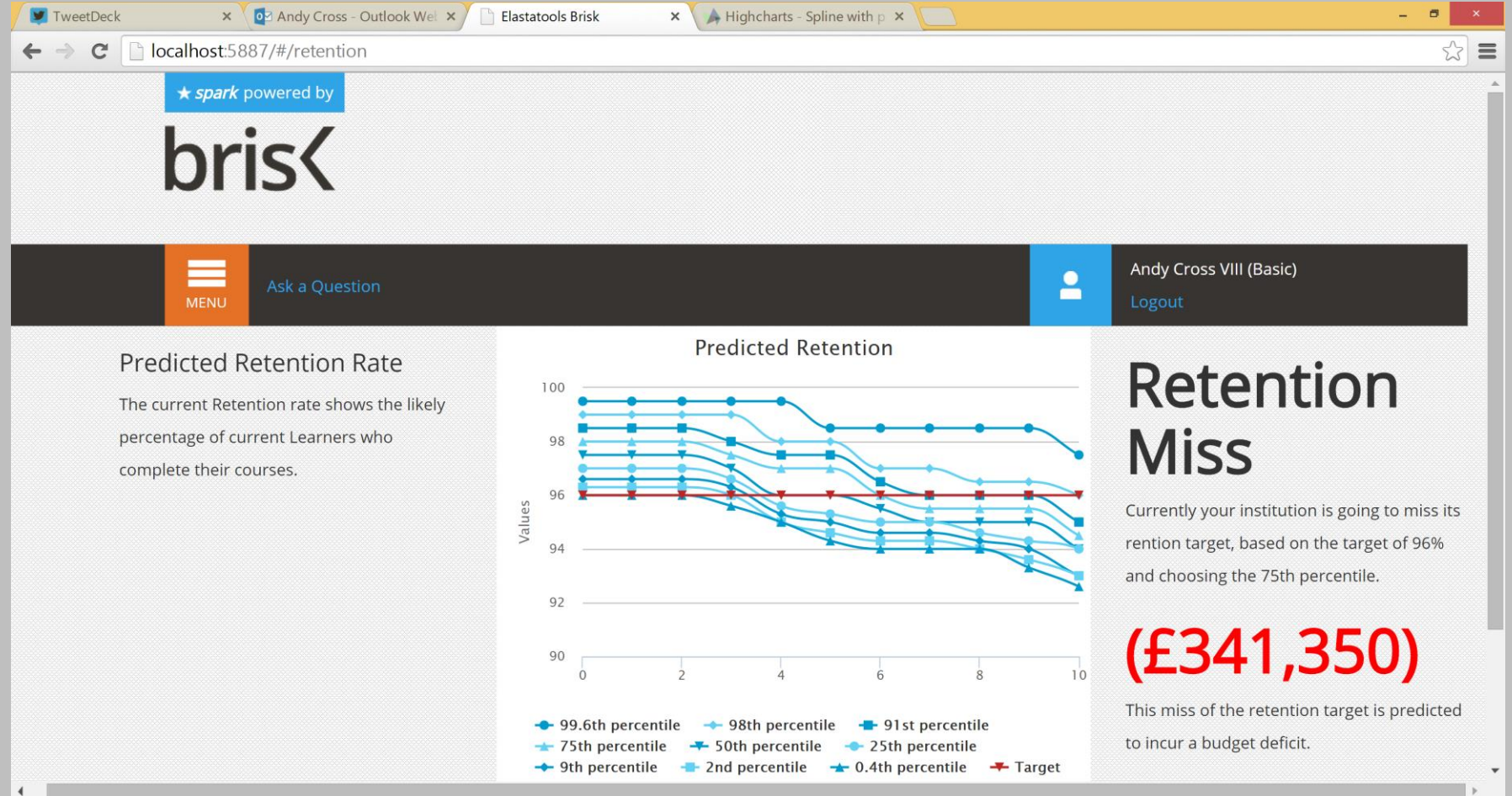
The screenshot shows a web browser with three tabs: TweetDeck, Andy Cross - Outlook Wel, and Elastatools Brisk. The address bar shows localhost:5887/#/attainment. The application has a dark header with a 'MENU' button, an 'Ask a Question' link, and a user profile for 'Andy Cross VIII (Basic)' with a 'Logout' link. The main content area is titled 'Attainment' with the subtitle 'Predicted Learner Year attainments.' Below this is a table with five columns: 'Alert', 'Update on', 'Name', 'Prediction', and 'Acceptable'. The table contains eight rows of data for different learners.

	Update on	Name	Prediction	Acceptable
Alert	8 minutes ago	Andy Alpha	Pass	true
Alert	8 minutes ago	Brian Bravo	Fail	false
Alert	8 minutes ago	Chris Charlie	Merit	true
Alert	8 minutes ago	Derek Delta	Pass	true
Alert	8 minutes ago	Eric Echo	Merit	true
Alert	8 minutes ago	Frank Foxtrot	Pass	true
Alert	8 minutes ago	Graham Golf	Abandon	false
Alert	8 minutes ago	Harry Hotel	Pass	true

Learner Retention Prediction

Brisk4Education can calculate the likelihood for retaining Learners based on historic measures and current Learner performance.

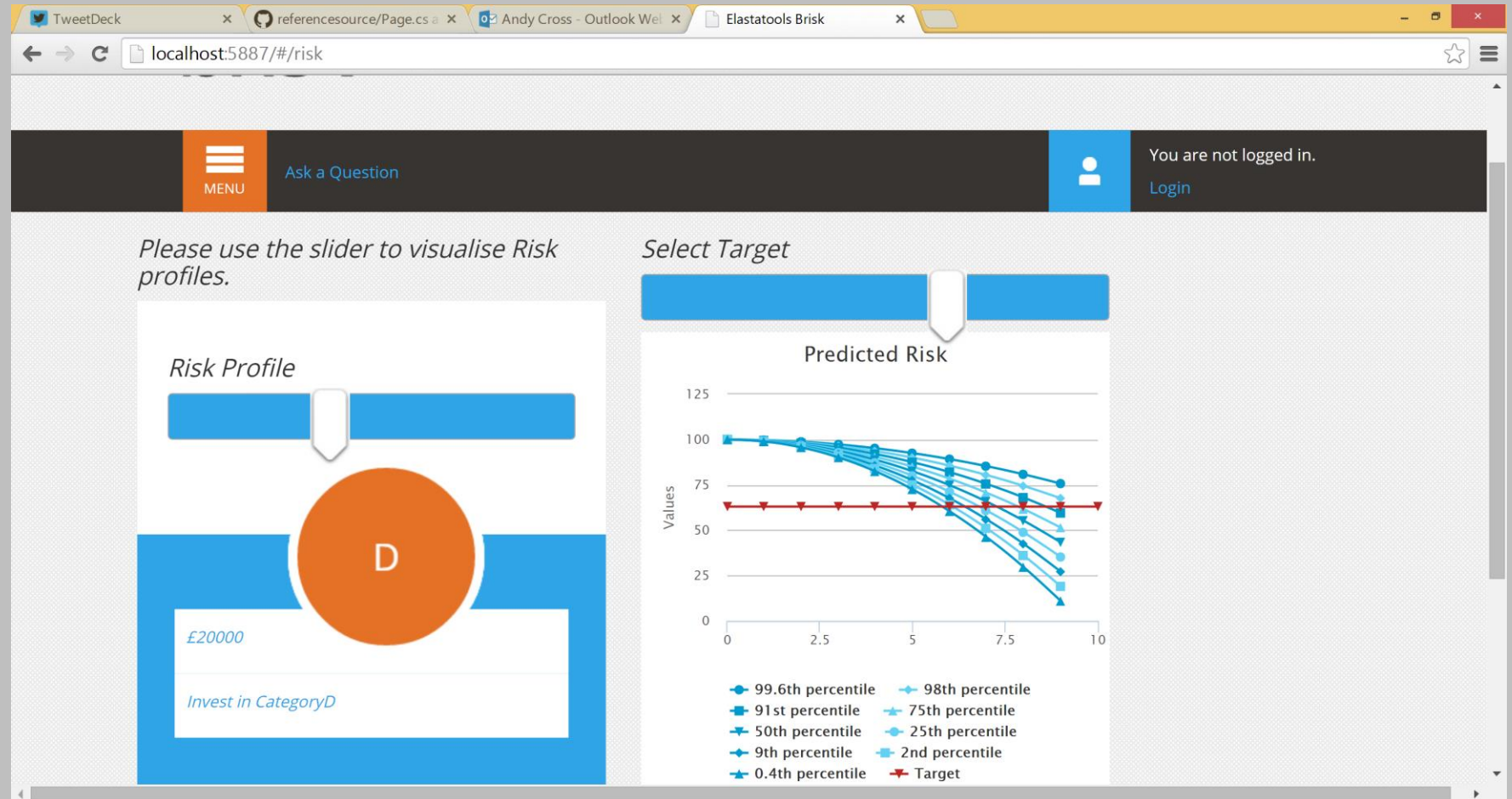
Based on this, a projection of target satisfaction and budgetary ramifications is computed for you.



Manage College Financial Risk

In Brisk4Education you are in control of numerous parameters gathered in a Risk Profile. You can modify these parameters and see how this will affect Learning in your institution.

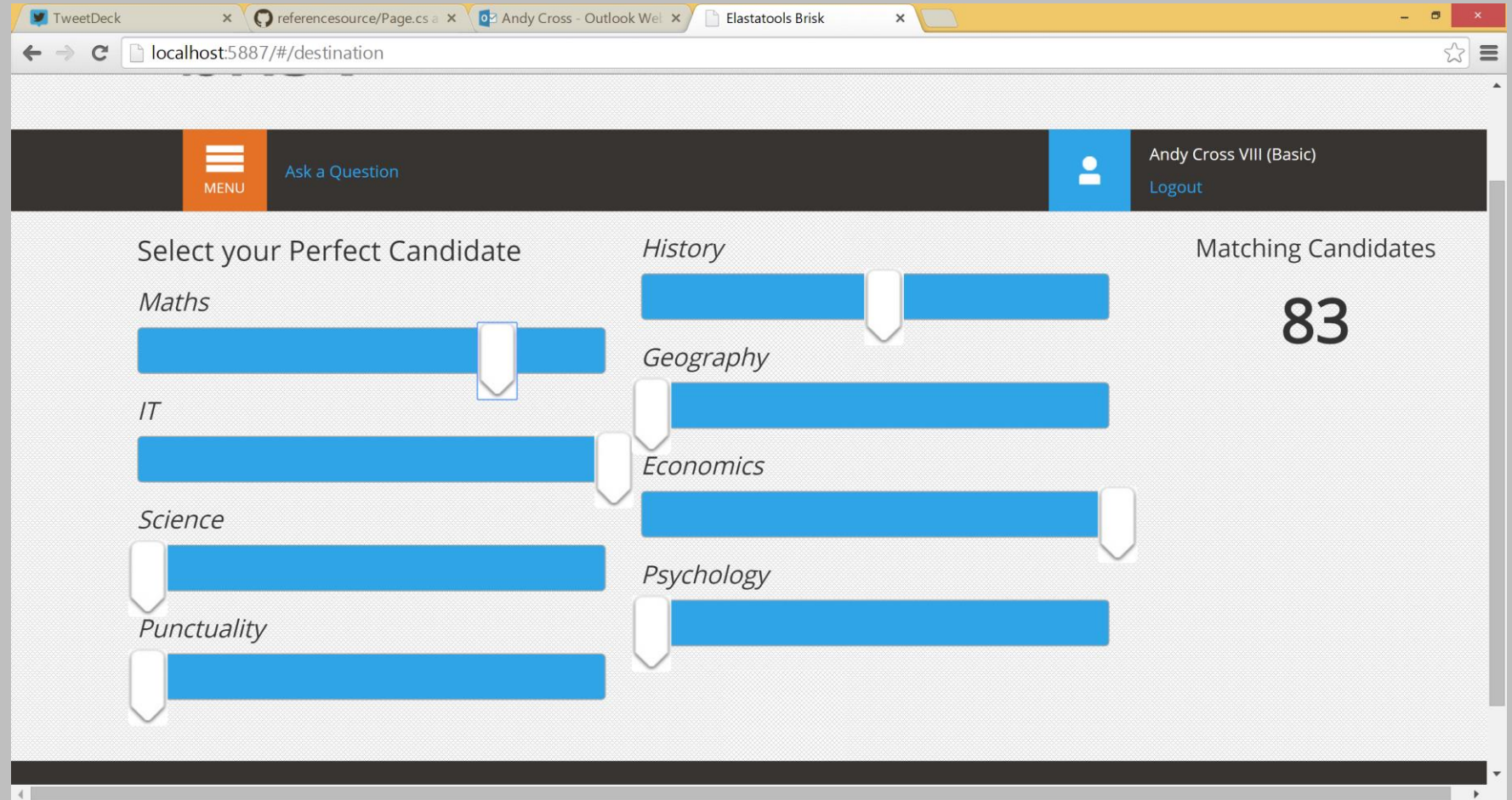
You can copy parameters from successful colleges to get started.



Manage Learner Destination

Brisk4Education connects potential employers with current Learners.

Through matching and collaborating on Learner futures, the institution can track and manage Destination data, you will better understand where a Learner has completed.



Advantages to College

Ability to predict likely retention and achievement



Controlling risk appetite within curriculum planning to increase focus on L.E.P. priorities

Accurate income forecasting based on predictive modelling



Exposing conditions of failure to plan future interventions

Video Case Study

<http://j.mp/brisk4edu>

andy@elastacloud.com

bris<4education

Thank
s