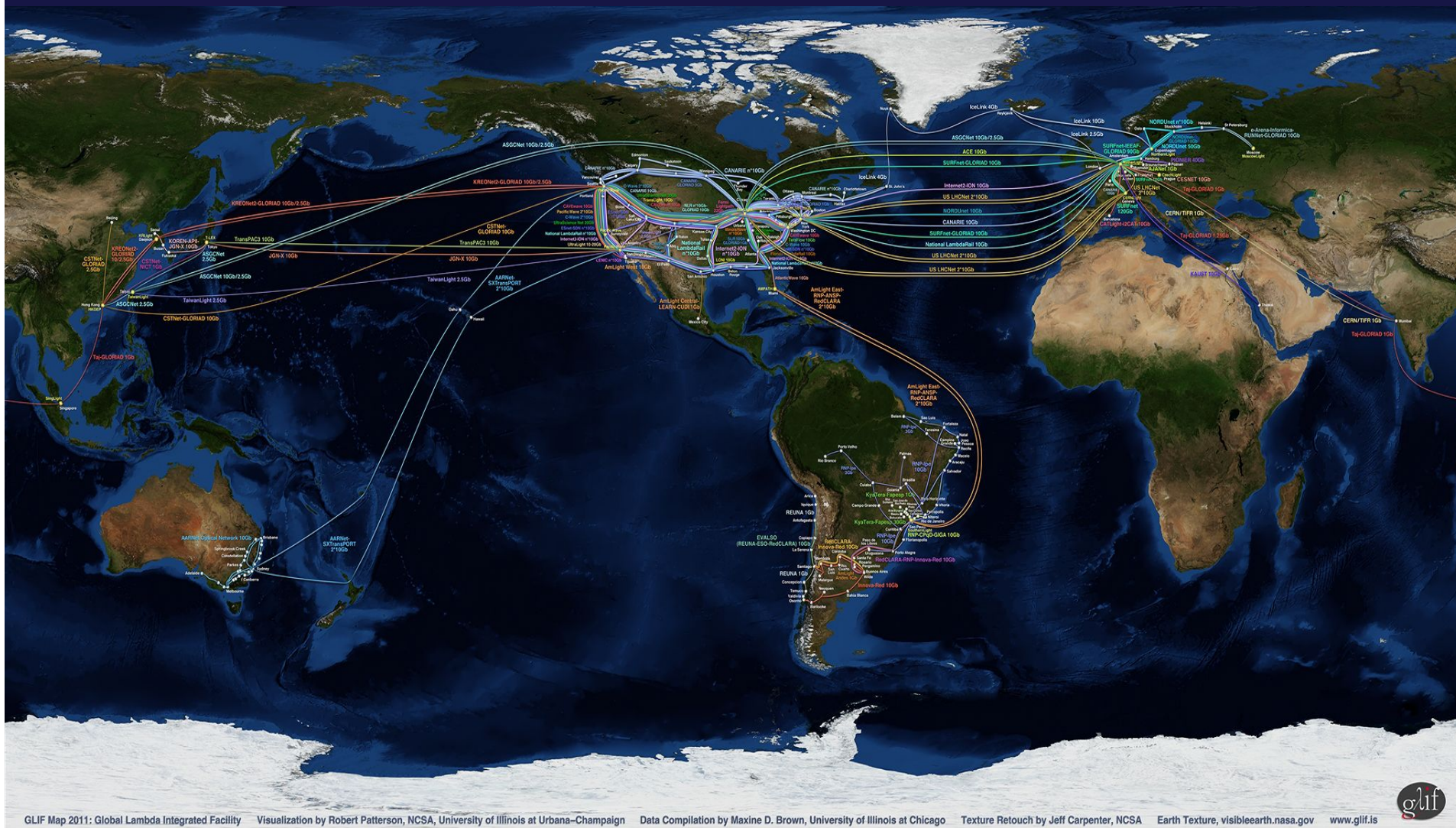


The GLIF map *does not* represent all the world's Research and Education optical networks



GLIF Map 2011: Global Lambda Integrated Facility Visualization by Robert Patterson, NCSA, University of Illinois at Urbana-Champaign Data Compilation by Maxine D. Brown, University of Illinois at Chicago Texture Retouch by Jeff Carpenter, NCSA Earth Texture, visibleearth.nasa.gov www.glif.is



REDE NACIONAL DE ENSINO E PESQUISA
PROMOVENDO O USO INOVADOR DE REDES AVANÇADAS NO BRASIL





INTER-AMERICAN DEVELOPMENT BANK
Integration and Trade Sector

REGIONAL PUBLIC GOODS
Promoting Regional Solutions to Regional Problems

<http://site.medicina.ufmg.br/proyectobid/>

Project RG-T1509 : Regional Protocols for Telehealth
Public Policies in Latin America (2009)



16-19/10/2013 - Ouro Preto, MG



Ministries of Health signed the commitment:
Brasil, Colombia, Ecuador, México, Uruguai,
El Salvador, Chile, Peru, Argentina, Guatemala,
Costa Rica, Venezuela, Paraguai, Rep.Dominicana,
Haiti, Bolivia, Panamá, Guiana

Project components

1. *Regional Standards for transmission and infra-structure*
2. *Strategy for the promotion, prevention and assistance through telehealth*
3. *Regional guide for telehealth managing*
4. *Strategy for a LA Telehealth University Network*
5. *Telehealth training and certification*
6. *Innovation in Telehealth*

finalists to the Innovation
Premium in Health LA

himss Latin America

2015



REDE NACIONAL DE ENSINO E PESQUISA
PROMOVENDO O USO INOVADOR DE REDES AVANÇADAS NO BRASIL

Networks and Resources

Ministério da Saúde Ministério da Cultura Ministério da Educação Ministério da Ciência, Tecnologia e Inovação



Remote Assistance



Program Telehealth Brazil Networks
Primary Care, 14 states, 4.141 / 2.367 pontos /
municipalidades
www.telessaudebrasil.org.br

Continuous Education



The Open Health University – Training on-the-job
for 200 thousand health professionals
www.universidadeabertadosus.org.br

Collaborative Research



The Telemedicine University Network, RUTE,
connects University and Teaching Hospitals
in all states www.rute.rnp.br
Today: 120 Telehealth Units, 57 SIGs Special
Interest Groups



REDE NACIONAL DE ENSINO E PESQUISA
PROMOVENDO O USO INOVADOR DE REDES AVANÇADAS NO BRASIL

<p>2</p> <p>11:00h - 12:30h SIG Vacinação</p>	<p>3</p> <p>10:00h - 11:00h SIG Acidente Vascular Cerebral (AVC)</p> <p>10:00h - 11:00h SIG ENT - Ear Nose and Throat</p> <p>11:00h - 12:00h SIG Hanseníase http://url.rnp.br?si</p> <p>11:00h - 12:00h SIG Sentinela</p> <p>16:00h - 17:30h SIG Hemorrede - Técnico-Científico http://url.rnp.br?He</p>	<p>4</p> <p>09:30h - 11:30h SIG Saúde Indígena</p> <p>10:00h - 11:30h SIG Hemorrede - Gestão http://url.rnp.br?si</p> <p>12:00h - 13:00h SIG Radiologia do Abdome http://url.rnp.br?si</p> <p>12:00h - 14:00h PAPRAPS: Programa de Apoio aos Programas de Residência em Área Profissional da... http://url.rnp.br?PA</p> <p>13:00h - 14:00h SIG Onco-Ginecologia</p> <p>14:00h - 15:30h SIG Saúde do Servidor Público</p>	<p>5</p> <p>08:30h - 10:00h SIG Mastologia</p> <p>15:30h - 17:00h SIG Estudo Longitudinal de Saúde do Adulto (ELSA)</p>	<p>6</p> <p>08:00h - 09:00h SIG Cardiologia</p> <p>10:30h - 12:00h SIG Cuidados Farmacêuticos</p>	<p>7</p>	<p>8</p>
<p>9</p> <p>11:30h - 12:30h SIG Endocrinologia Pediátrica</p> <p>12:00h - 13:00h SIG Odontologia - Diagnóstico Bucal</p> <p>15:00h - 17:00h SIG Residência Multiprofissional e em</p>	<p>10</p> <p>10:00h - 11:00h SIG Medicina Tropical</p> <p>11:00h - 12:00h SIG Medicina Fetal</p> <p>11:00h - 12:00h SIG Sentinela</p>	<p>11</p> <p>12:00h - 14:00h PAPRAPS: Programa de Apoio aos Programas de Residência em Área Profissional da... http://url.rnp.br?PA</p> <p>13:00h - 14:00h SIG Urologia</p>	<p>12</p> <p>09:00h - 10:00h SIG Reumatologia Pediátrica</p> <p>11:00h - 12:00h SIG Cardiologia</p> <p>12:00h - 13:00h SIG Ressuscitação Cardiorrespiratória (RCR)</p>	<p>13</p> <p>08:00h - 09:00h SIG Cardiologia</p> <p>09:30h - 11:00h SIG Técnico Operacional RUTE</p> <p>11:30h - 13:00h SIG Terapia Ocupacional em</p>	<p>14</p>	<p>15</p>

X

De: 06/11/15

Duração: 10:30 – 12:00

Título: SIG Cuidados Farmacêuticos

Apresentador: Diego Gnatta (Professor da Universidade de Caxias do Sul)

Tema: **Clinical pharmacist's role in renal transplant team**

Descrição:

URL:

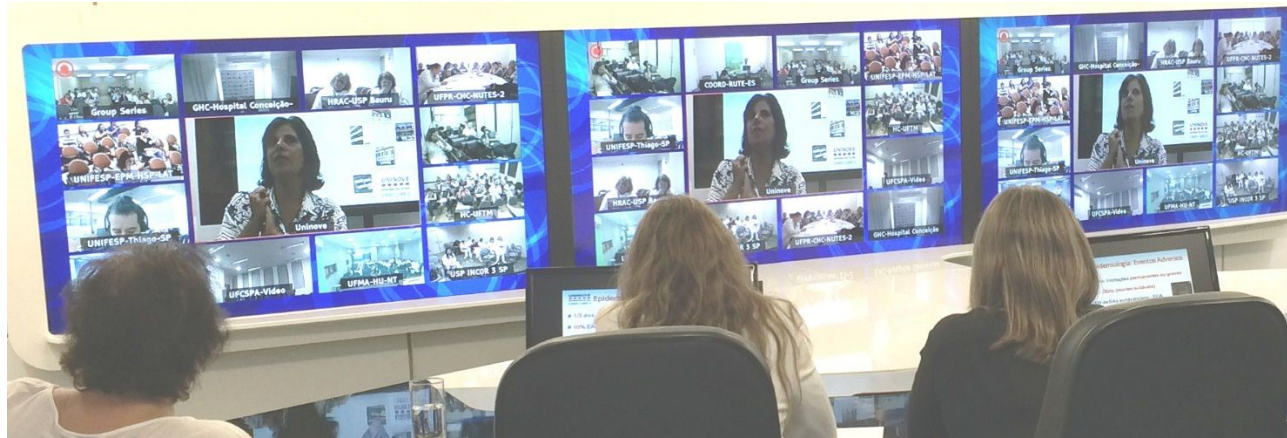
Tipo: Webconferência

Preceptors update Set – Dec 2015

Ministério da Saúde Ministério da Cultura Ministério da Educação Ministério da Ciência, Tecnologia e Inovação



National Multi-professional Residency Program in videoconference: ca. 45 VC rooms and 617 preceptors every week



13 sessions
7000 participants
in 3 months



Cost avoidance
ca. 4 million US\$



REDE NACIONAL DE ENSINO E PESQUISA
PROMOVENDO O USO INOVADOR DE REDES AVANÇADAS NO BRASIL



Telehealth in the State of Minas Gerais

Ministério da Saúde

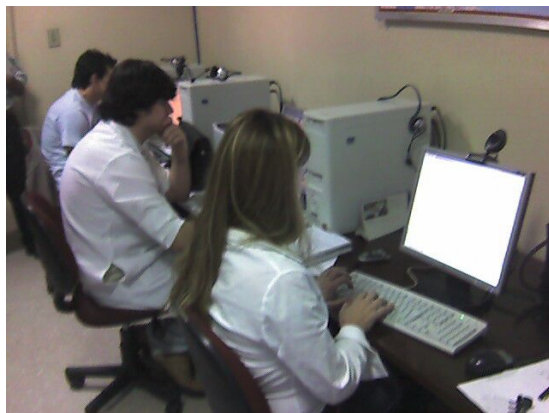
Ministério da Cultura

Ministério da Educação

Ministério da Ciência, Tecnologia e Inovação

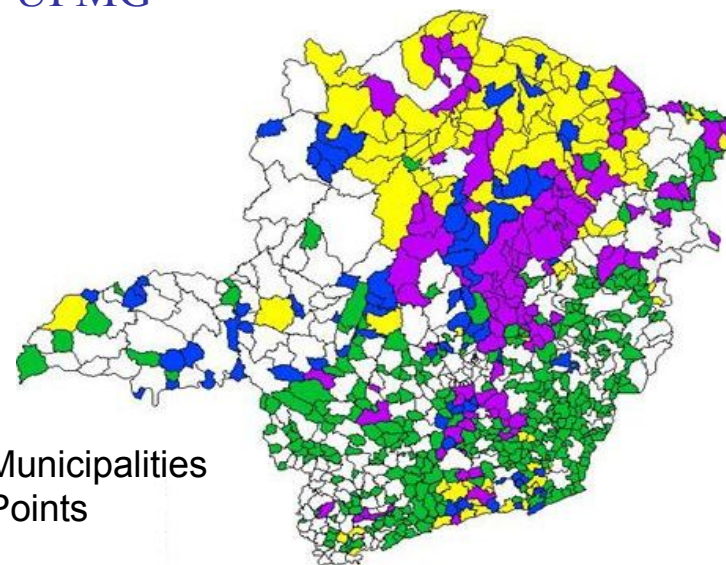


Clinical Hospital - Federal University of Minas Gerais - UFMG
Minas Gerais Health State Department



12hours/day
1500 ecg/day
1300 Teleconsult/month
(UFMG, UFU, UFTM, UFJF, Montes Claros, UFSJ)

770 Municipalities
900 Points



80% of the telepatients need no transfer to Reference Centers

10% municipal health budget savings

More than 2 million TeleECG



REDE NACIONAL DE ENSINO E PESQUISA
PROMOVENDO O USO INOVADOR DE REDES AVANÇADAS NO BRASIL



OMS/2013 "eHealth and innovation in child and women health" study in 64 countries indicates:

78% lack on qualified personnel

77% inadequate infrastructure

NRENs help bridging this gap!

- eHealth aims at:
 - Reducing cost of healthcare delivery;
 - Improving quality of healthcare services;
 - Improving equity of access to healthcare services and products.

Some examples of evidence

- Telemedicine for chronic diseases
- Telemedicine doubles screening rates for retinopathy
- Mobile phones and HIV
- Web-based treatment of diabetic patients

Alert

- Evaluation with scientific vigour
- Comprehensive approach is needed
- Partnerships building PPP

